

With Color Zone Limit Indicator Series G36-L/G46-L

RoHS



G36-10-01-L

G46-10-02-L

Standard Specifications

Model		G36-L	G46-L
Type	Back side thread		
Port size ^{Note 1)}	R 1/8		R 1/8, R 1/4
Fluid ^{Note 2)}	Air		
Indication precision	±3%F.S. (Full span) ^{Note 3)}		
Case (Surface treatment)	Stainless steel (Black melamine painted)		
Material	Clear cover	Polycarbonate (Part no.: G36-00-00-3) Nylon (Part no.: G36-00-00-3N)	Polycarbonate (Part no.: G46-00-00-3) Nylon (Part no.: G46-00-00-3N)
	Stud	Brass	
	Bourdon tube	Brass	
Weight (kg)	0.04		0.05
Attachment: With cover ring assembly	C	Part no.: 1305104-1A	
	C1	Part no.: 1305104-3A	

Note 1) When mounting a pressure gauge, use caution not to tighten excessively. Excessive tightening will cause product to be damaged. Use a pipe tape for sealing.

Recommended tightening torque: R 1/8: Set between 7 to 9 N·m, R 1/4: 12 to 14 N·m respectively.

Note 2) When using other fluids, please consult with SMC for fluid compatibility information concerning corrosive potential.

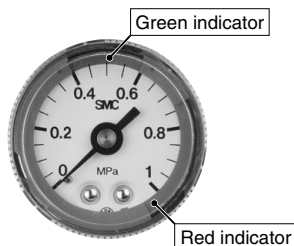
Note 3) Temperature conditions: at 20°C (±5°C), in other cases, ±6°C F.S.

Model (Standard)

Model	Pressure range ^{Note)}		Green zone setting range		Indication unit	Connection thread	Note
	MPa	psi	Minimum setting range MPa	Maximum setting range MPa			
G36-2-01-L□	0 to 0.2	0 to 30	0.01	0.1	MPa	R 1/8	—
G36-4-01-L□	0 to 0.4	0 to 60	0.02	0.2			
G36-10-01-L□	0 to 1.0	0 to 150	0.05	0.5			
G46-2-01 to 02-L□	0 to 0.2	0 to 30	0.01	0.1	MPa	R 1/8 1/4	
G46-4-01 to 02-L□	0 to 0.4	0 to 60	0.02	0.2			
G46-10-01 to 02-L□	0 to 1.0	0 to 150	0.05	0.5			

Note) Do not apply pressure more than the maximum display pressure. This will cause a malfunction.

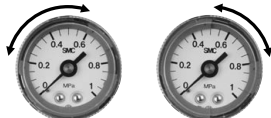
■Red and green zones offer improved visibility of pressure control range.



Green indicator

Red indicator

Indicator adjusts to highlight preferred range.



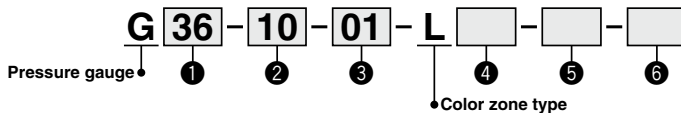
Model (Made to Order)

Model	Pressure range ^{Note 1)}		Green zone setting range		Indication unit	Connection thread	Note
	MPa	psi	Minimum setting range MPa (psi)	Maximum setting range MPa (psi)			
G36-P2-01-L□-X30	0 to 0.2	0 to 30	0.01 (2)	0.1 (14)	MPa	R 1/8	—
G36-P4-01-L□-X30	0 to 0.4	0 to 60	0.02 (4)	0.2 (28)			
G36-P10-01-L□-X30	0 to 1.0	0 to 150	0.05 (10)	0.5 (70)			
G46-P2-01 to 02-L□-X30	0 to 0.2	0 to 30	0.01 (2)	0.1 (14)	psi	R 1/8 1/4	
G46-P4-01 to 02-L□-X30	0 to 0.4	0 to 60	0.02 (4)	0.2 (28)			
G46-P10-01 to 02-L□-X30	0 to 1.0	0 to 150	0.05 (10)	0.5 (70)			

Note 1) Do not apply pressure more than the maximum display pressure. This will cause a malfunction.

Note 2) Under the New Measurement Law, products for overseas use only (SI unit type for use in Japan).

How to Order

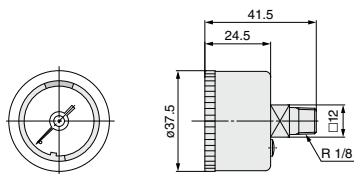


		Symbol	Description	1	
				Size	
				G36	G46
2	Max. display pressure	2	0.2 MPa	●	●
		4	0.4 MPa	●	●
		10	1.0 MPa	●	●
		P2 ⁽¹⁾	0.2 MPa, 30 psi	○ ⁽²⁾	○ ⁽²⁾
		P4 ⁽¹⁾	0.4 MPa, 60 psi	○ ⁽²⁾	○ ⁽²⁾
		P10 ⁽¹⁾	1.0 MPa, 150 psi	○ ⁽²⁾	○ ⁽²⁾
		+			
3	Connection thread	01	R 1/8	●	●
		02	R 1/4	—	●
		+			
4	Clear cover material	Nil	Polycarbonate	●	●
		N	Nylon	●	●
		+			
5	Attachment	Nil	Without cover ring assembly	—	●
		C	Clear cover has no protrusion. (Clear cover is irremovable.)	—	●
		C1	Clear cover has protrusion. (Clear cover is removable.)	—	●
		+			
6	Special specification	Nil	—	●	●
		X2	Stud parts nickel plated	●	—
		X30	Both MPa and psi	○ ⁽²⁾	○ ⁽²⁾

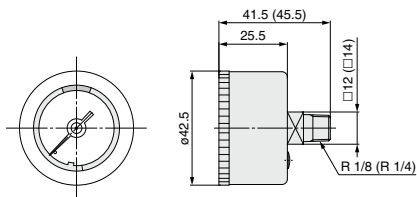
Note 1) This symbol must be used with Special specification "X30."
 Note 2) Under the New Measurement Law, products for overseas use only (SI unit type for use in Japan)

Dimensions * The dimensions in (): Connection thread R 1/4

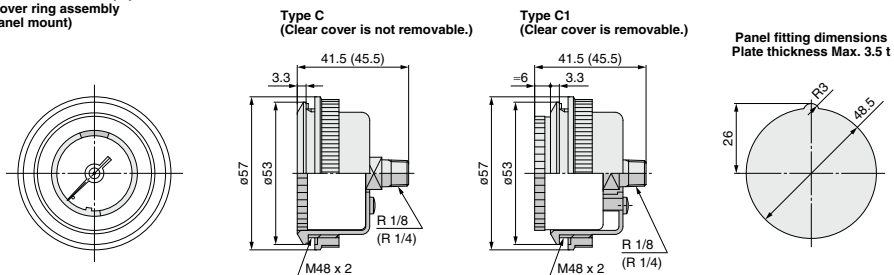
G36-□□-01-L (N)



G46-□□-01 to 02-L(N)



G46-□□-01 to 02-L(N)-C
G46-□□-01 to 02-L(N)-C1
 With cover ring assembly
 (For panel mount)



G
GS
PPA